

Handling System for Rack Type Dishwasher Loading & Unloading Table, 1100mm

ITEM # _____
 MODEL # _____
 NAME # _____
 SIS # _____
 AIA # _____



865400 (BHRLU11)

Dishwasher table, loading/
unloading, 1100 mm

Short Form Specification

Item No.

For rack type dishwashers. Constructed in 304 AISI stainless steel. N.2 square 40x40mm square legs on height-adjustable feet. Basket direction: from right to left and from left to right.

Main Features

- The table intended to connect directly with the rack type dishwasher on loading and/or unloading side.
- Suitable to be installed alone with the rack type dishwasher to save space.
- Supplied knocked-down and easy to assemble.
- Designed to transport 500x500 mm dishwashing baskets.

Construction

- 304 AISI stainless steel construction throughout.
- Stainless steel feet 50 mm adjustable in height to ensure that tables drain back into the dishwasher.
- Deep anti-drip profiles completely folded with lower edge for safe and easy cleaning.
- All surfaces smooth with polished finish.
- 40x40 mm square tubular legs in AISI 304 stainless steel.
- Optionally equipped with plain undershelves and end limit switch.
- To be secured to the dishwasher and fitted with one pair of legs at the other end.
- Optional splash back available to align the table with the rack type dishwasher and to prevent water spatter.

Optional Accessories

- 2 legs for floor mounted storing shelf PNC 855296 ☐
- End limit switch for basic unloading tables PNC 865385 ☐
- Floor fastening kit for 2 square legs PNC 865386 ☐
- Removable bridge table, 800 mm PNC 865418 ☐
- Removable bridge table with hole, 800 mm PNC 865419 ☐
- Wall/floor mounted storing shelf, 1100 mm PNC 865420 ☐
- Small splashback (to be aligned with the back of the Rack Type Dishwasher), 1100 mm PNC 865423 ☐
- Underself for dishwasher table, 1100 mm PNC 865480 ☐

APPROVAL: _____



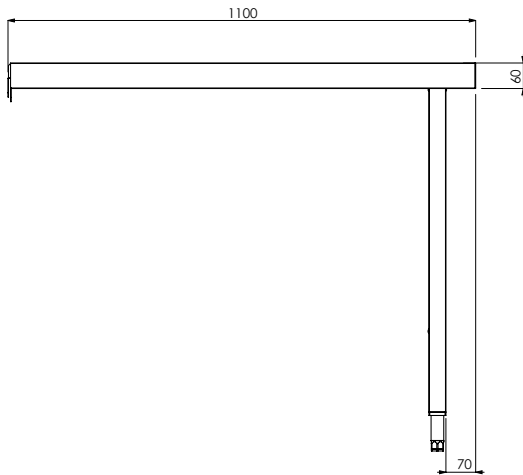
Electrolux
PROFESSIONAL

Handling System for Rack Type Dishwasher Loading&Unloading Table, 1100mm

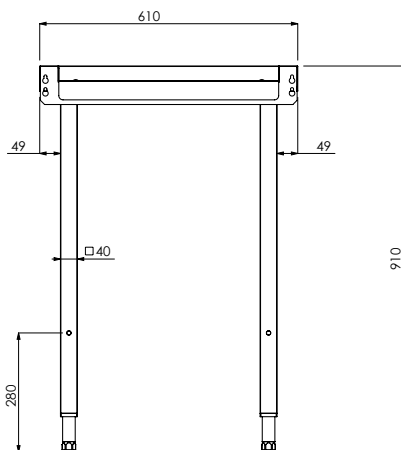
Key Information:

External dimensions, Width:	
865400 (BHRLU11)	1100 mm
External dimensions, Depth:	610 mm
External dimensions, Height:	910 mm
Net weight:	13 kg

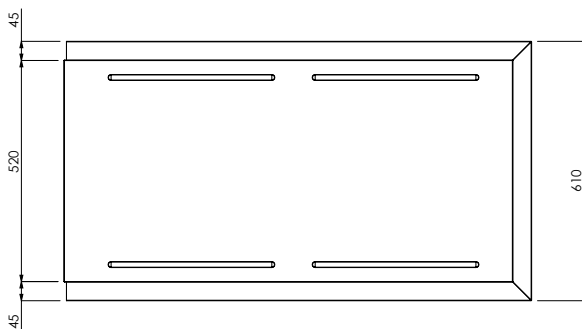
Front



Side



Top



Handling System for Rack Type
Dishwasher Loading&Unloading Table, 1100mm

The company reserves the right to make modifications to the products
without prior notice. All information correct at time of printing.

2025.08.07